

## Hybrid Transformer Based High Boost Ratio DC-DC Converter for Photovoltaic Applications

K. Jyotshna devi<sup>1</sup>, N. Madhuri<sup>2</sup>, P. Chaitanya Deepak<sup>3</sup>

<sup>1</sup>(EEE DEPARTMENT, S.V.P.C.E.T, PUTTUR)

<sup>2</sup>(EEE DEPARTMENT, S.V.P.C.E.T, PUTTUR)

<sup>3</sup>(EEE DEPARTMENT, S.V.R.E.C, Nandyal)

**Abstract:** Now-a-days due to the shortage of electric power and rising cost of non-renewable energy resources generating electric power from the renewable energy resources such as PV modules are increasing day to day. This paper presents non-isolated, high step-up dc-dc converter with hybrid transformer with for low voltage renewable energy resources applications. The proposed converter utilizes hybrid transformer to transfer the inductive and capacitive energy simultaneously, achieving high step-up voltage with smaller sized magnetic component, the turn-off loss of switch is minimized, increasing the efficiency of the converter under all load conditions. By changing the input voltage the voltage stresses on the active switch and diodes are maintained at low level and are independent as a result of the resonant capacitor transferring energy to the output of the converter. Due to high system efficiency as well as ability to operate with a wide variable input voltage, the proposed dc-dc converter is an attractive design for alternative low dc voltage energy sources, such as solar PV modules and fuel cells.

**Keywords:** High boost ratio dc-dc, high efficiency, hybrid transformer, photovoltaic (PV) module.

### I. INTRODUCTION

Due to the rising costs and limited amount of Non-renewable energy sources, there is an increasing demand for the utilization of renewable energy sources such as photovoltaic modules. Integrating the power from the PV module into the existing power distribution infrastructure can be achieved through power conditioning systems (PCS).

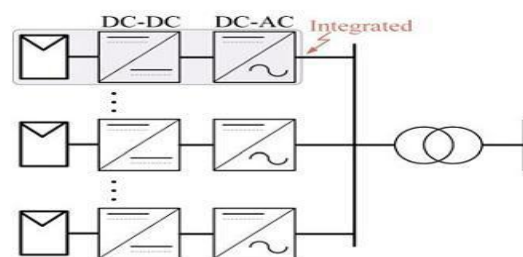


Fig.1. Two-state PV module integrated Micro inverter.

Typical PCS can be accomplished using a single stage or a double-stage as shown in Fig. 1. The double-stage PCS consists of a dc-dc conversion stage that is connected to either a low power individual inverter or a high-power centralized inverter that multiple converters could connect to. The dc-dc conversion stage of the PCS needs a high efficiency and high boost ratio dc-dc converter to increase the low dc input voltage from the PV panel to a higher dc voltage.

The high boost ratio dc-dc converter for such systems can be isolated or non-isolated [1]; however, transformer-isolated converters tend to be less efficient and more expensive due to the increased manufacturing costs. A non-isolated dc-dc converter with a high boost ratio would be advantageous for a two-stage PCS [1] because it can be easily integrated with current PV systems while reducing the cost and maintaining a high system efficiency. Due to the different output voltages from the PV panel, it would be useful to have a system with a high efficiency over the entire PV voltage range to maximize the use of the PV during different operating conditions.

### A. LITERATURE SURVEY

To obtain a high step-up gain with high efficiency in non-isolated applications, a high step-up method based on isolated-type converters is introduced. By stacking the secondary side of an isolated converter in addition to its primary side, a high step-up conversion ratio as well as distributed voltage stress can be achieved. Moreover, a careful selection of an isolated converter can provide zero-voltage switching (ZVS), continuous input current and

reduced reverse recovery on diodes. Depends on a conventional voltage doubler rectifier boost-integrated half-bridge converter, the proposed converter satisfies all these features, which make it apt for high step-up applications.

### B. HIGH BOOST DC-DC CONVERTER

Of the many high boost ratio dc-dc converter topologies, a combination of flyback and boost converters is proposed to increase the boost ratio without significant cost and efficiency penalties is shown in fig.2.

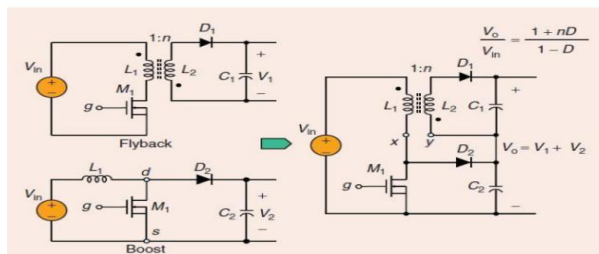


Fig.2. A high boost ratio dc-dc converter circuit derived from cascading a fly back converter and a boost converter

As the output voltage is the sum of a flyback converter, which consists of  $L_1=L_2$ ,  $D_1$ , and  $C_1$ , and a boost converter, which consists of  $L_1$ ,  $M_1$ ,  $D_2$ , and  $C_2$ . Since the flyback output is  $nD/(1-D)$  and boost output is  $1/(1-D)$ , the total output voltage is  $(1+nD)/(1-D)$ . Here,  $n$  is the turns ratio between the secondary and primary, and  $D$  is the switch duty cycle. When the switch  $M_1$  is turned on, the energy is stored in  $L_1$ , and when  $M_1$  is turned off, the energy is released to charge both  $C_1$  and  $C_2$  through diodes  $D_1$  and  $D_2$ . The problem is when  $M_1$  turns on these diodes need to be turned off, and a parasitic capacitance across  $D_1$  and the leakage inductance can cause severe ringing and additional voltage stress on  $D_1$ . If the leakage inductance is negligible, then the output voltage equals  $(2+n)V_{in}/(1-D)$ . The output of fly back and boost converters converter in [8] remained; however, the same issues that affected the converter in [8] remained.

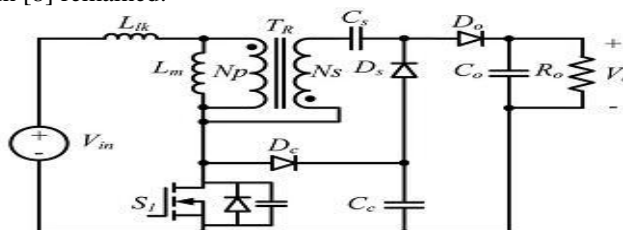


Fig.3. High step-up dc-dc converter with coupled inductor and switched capacitor

By adding a switched-capacitor in series with the energy transformer path, a new improved high boost ratio dc-dc converter with coupled-inductor and switched capacitor, as shown in Fig. 3, was introduced. With the switched-capacitor inserted between the primary side and secondary side of the coupled-inductor, the boost ratio was increased and the output diode voltage stress was reduced closer to that of the output dc bus voltage. However, the magnetic core

was not fully utilized because it functioned more as an inductor than as a transformer. Light load efficiency of the converter is also reduced because switching losses were more dominant under light load conditions.

For PV module converter, the high efficiency over a wide load range and input voltage range is extremely important. In this paper, a high boost ratio dc-dc converter with hybrid transformer is presented to achieve high system level efficiency over wide input voltage and output power ranges. By adding a small resonant inductor and reducing the capacitance of the switched-capacitor in the energy transfer path, a hybrid operation mode can be achieved. The inductive and capacitive energy can be transferred simultaneously to the high voltage dc bus increasing the total power delivered decreasing the losses in the circuit. Output voltage is compared with a reference voltage to turn on the switch so as to keep the output voltage constant.

## II. PROPOSED METHOD

### A. Proposed Converter Topology and Operation Analysis

Fig.4 shows the circuit diagram of the proposed converter.  $C$  is the input capacitor; HT is the hybrid transformer with the turns ratio  $1:n$ ;  $S_1$  is the active MOSFET switch;  $D_1$  is the clamping diode, which provides a current path for the leakage inductance of the hybrid transformer when  $S_1$  is OFF,  $C_c$  captures the leakage energy from the hybrid transformer and transfers it to the resonant capacitor  $C_r$  by means of a resonant circuit composed of

$C_c$ ,  $C_r$ ,  $L_r$ , and  $D_r$ ;  $L_r$  is a resonant inductor, which operates in the resonant mode; and  $D_r$  is a diode used to provide an unidirectional current flow path for the operation of the resonant portion of the circuit.  $C_r$  is a resonant capacitor, which operates in the hybrid mode by having a resonant charge and linear discharge. The turn on of  $D_r$  is determined by the state of the active switch  $S_1$ .  $D_o$  is the output diode similar to the traditional coupled inductor boost converter and  $C_o$  is the output capacitor.  $R_o$  is the resistive load.

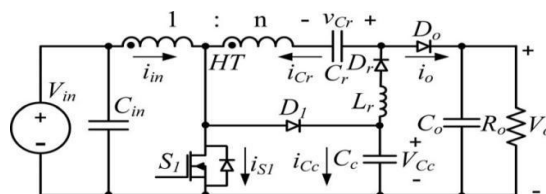


Fig.4. Proposed high step-up dc-dc converter with Hybrid transformer

Fig. 4 illustrates the five steady-state topology stages of the proposed dc-dc converter for one switching cycle.

### B. Operating Modes

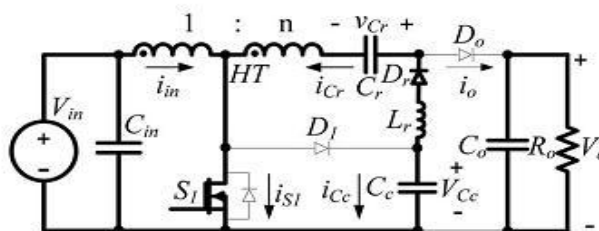


Fig.5. Mode 1 [t0-t1]

Mode 1 [t0, t1]: In this period, MOSFET  $S_1$  is ON, the magnetizing inductor of the hybrid transformer is charged by input voltage,  $C_r$  is charged by  $C_c$ , and the secondary reflected input voltage  $nV_{in}$  of the hybrid transformer together by the resonant circuit composed of secondary side of the hybrid transformer,  $C_r$ ,  $C_c$ ,  $L_r$ , and  $D_r$ . The current in MOSFET  $S_1$  is the sum of the resonant current and linear magnetizing inductor current.

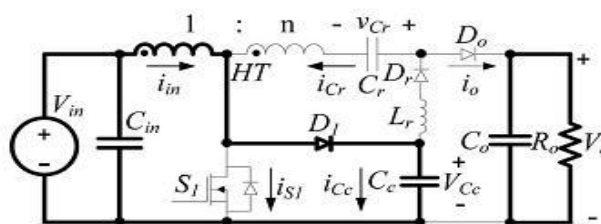


Fig.6. Mode 2 [t1-t2]

Mode 2 [t1, t2]: At time  $t_1$ , MOSFET  $S_1$  is turned OFF, the clamping diode  $D_1$  is turned ON by the leakage energy stored in the hybrid transformer during the time period that the MOSFET is ON and the capacitor  $C_c$  is charged which causes the voltage on the MOSFET to be clamped.

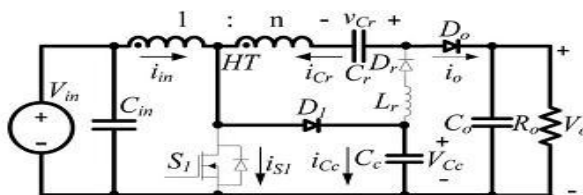


Fig.7. Mode 3 [t2-t3]

Mode 3 [t2, t3]: At time  $t_2$ , the capacitor  $C_c$  is charged to the point that the output diode  $D_o$  is forward-biased. The energy stored in the magnetizing inductor and capacitor  $C_r$  is being transferred to the load and the

clamp diode D1 continues to conduct while Cc remains charged.

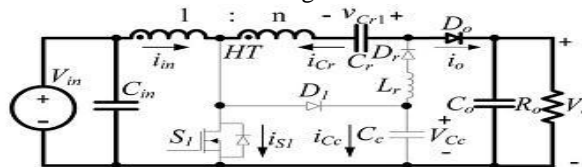


Fig.8. Mode 4 [t3-t4]

Mode 4 [t3, t4]: At time t3 , diode D1 is reversed biased and the energy stored in magnetizing inductor of the hybrid transformer and in capacitor Cr is simultaneously transferred to the load. During the steady-state operation, the charge through capacitor Cr must satisfy charge balance.

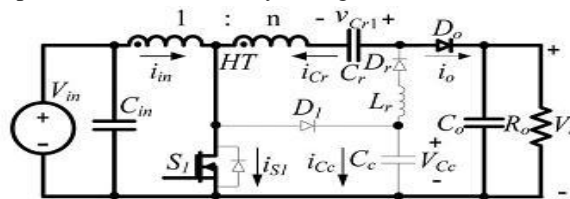


Fig.9. Mode 5 [t4-t0]

Mode 5 [t4, t0]: The MOSFET S1 is turned ON at time t4. Due to the leakage effect of the hybrid transformer, the output diode current io will continue to flow for a short time and the output diode D0 will be reversed biased at time t0 ; then the next switching cycle starts

$$V_{S1} = V_{D1} = \frac{V_i n}{1 - D} = \frac{V_0}{2 + n}$$

$$V_{Dr} = V_{D0} = V_0 - V_{Cc} = V_0 - \frac{V_i n}{1 - D} = \frac{(1 + n)V_0}{2 + n}$$

From the above equations it is obvious that all the voltage stresses of the switches are independent of input voltage and load conditions. In other words, all the voltage stresses of the switches are optimized based on the output voltage and the turns ratio of the transformer.

#### D. Advantages over conventional non resonant high step- up converter:

In the proposed high boost ratio dc dc converter the inductive and capacitive energy can be transferred simultaneously to the high voltage dc bus increasing the total power delivered decreasing the losses in the circuit. As a result of the energy transferred through the hybrid transformer that combines the modes where the transformer operates under normal conditions and where it operates as a coupled-inductor, the magnetic core can be used more effectively and smaller magnetics can be used. The continuous input current of the converter causes a smaller current ripple than that of previous high boost ratio converter topologies that used coupled inductors. The lower input current ripple is useful in that the input capacitance can be reduced and it is easier to implement a more accurate MPPT for PV modules. The conduction losses in the transformer are greatly reduced because of the reduced input current RMS value through the primary side. The voltage stress of the switch is always at a low voltage level and independent of the input voltages.

### III. TWO-PHASE INTERLEAVED EXTENSION

In order for the proposed converter to be used in higher power level conversion applications, the interleaving method applicable to the traditional high boost ratio PWM dc–dc converter can be employed. This gives the advantages of standard interleaved converter systems such as low-input current ripple, reduced output voltage ripple, and lower conduction losses.

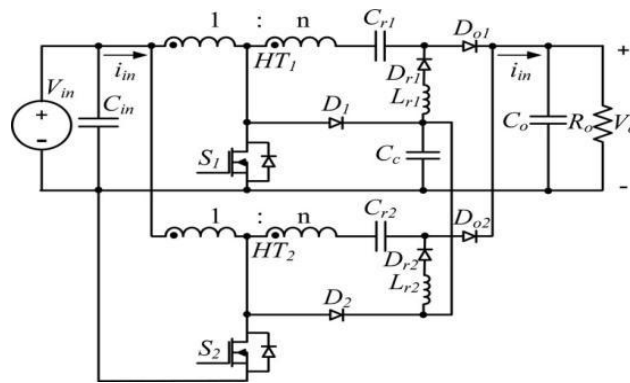


Fig.10. Two-phase extension for proposed converter

Fig.10 represents two-phase extension of proposed converter. The difference between standard interleaved converters and the proposed interleaved converter is that the clamping capacitor  $C_c$  can also be shared by the interleaved units reducing the total number of components in the system.

#### IV. SIMULATION RESULTS

In order to verify the effectiveness of the proposed converter, the converter was designed in MATLAB/SIMULINK environment.

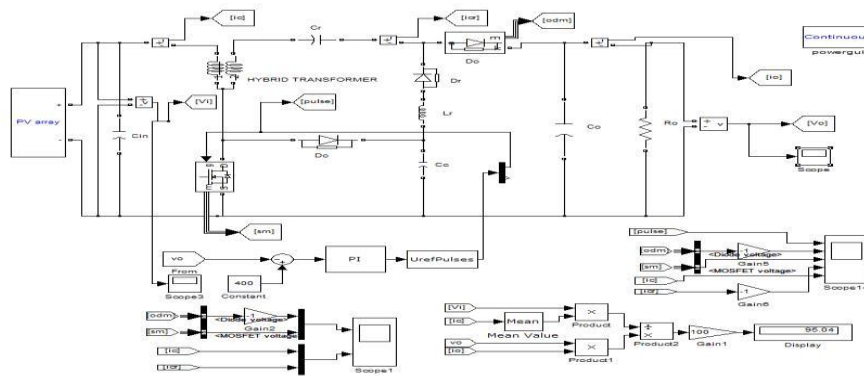


Fig.11. Simulation diagram of proposed high boost ratio hybrid transformer dc-dc converter(single stage).

Fig.11 represents Simulink model of proposed high boost ratio hybrid transformer dc-dc converter. In this input voltage=30v given to this converter. The voltage is stepped up using a hybrid transformer and due to the capacitance  $C_0$  the ripples will be reduced and the fine DC voltage is obtained at the output side of the circuit.

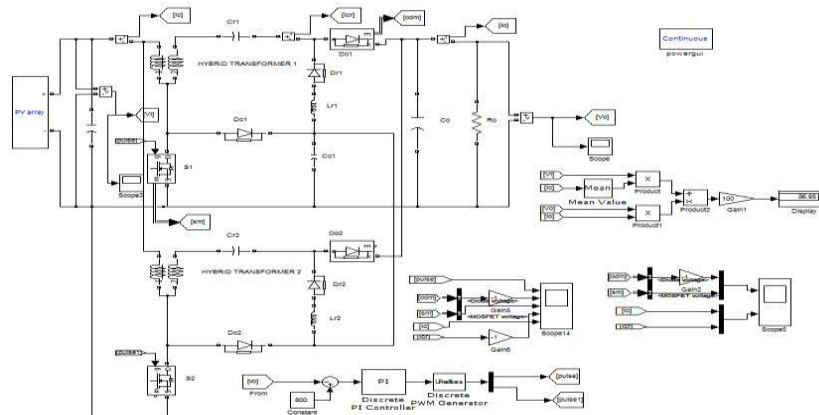


Fig.12. Simulation diagram of proposed high boost ratio hybrid dc-dc converter(Two stage).

Fig.12 represents Simulink model of proposed high boost ratio hybrid transformer dc-dc converter with two stage. In this input voltage=30v given to this converter. Here also, the same process will be done. The additional part we are adding another proposed converters. The outputs of these two converters are being connected in series.

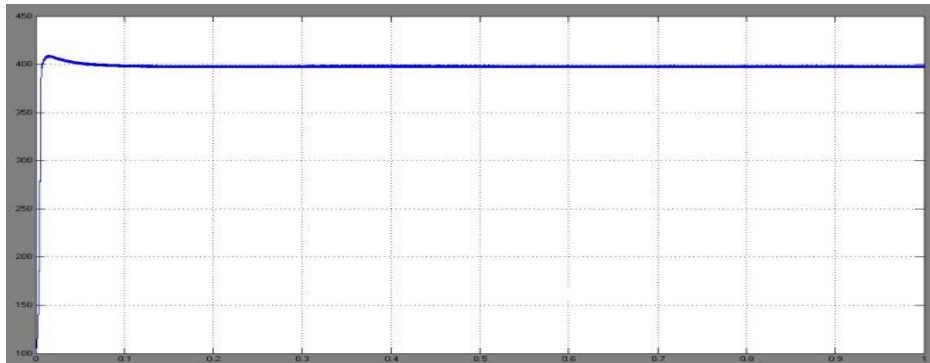


Fig.13. Output voltage at input voltage=30V (single stage)

Fig.13 shows the output voltage waveform of proposed high boost ratio hybrid transformer dc-dc converter with single stage which is seen that the voltage gradually increasing from 0v to 390v

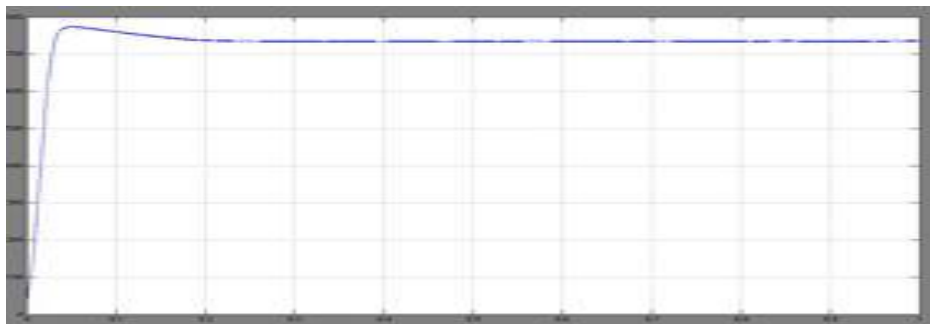


Fig.14 output voltage at input voltage= 30V( Two stage)

Fig.14 shows the output voltage waveform of proposed high boost ratio hybrid transformer dc-dc converter with two stage which is seen that the voltage gradually increasing from 0v to 730v

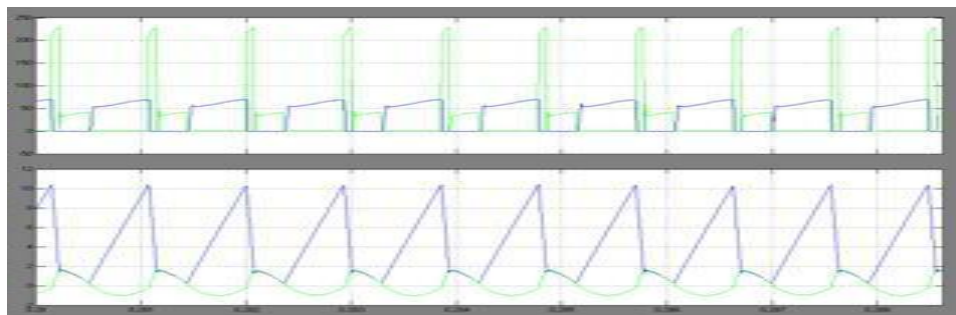


Fig.15. Simulated waveforms of high boost converter with single stage: switch voltage ( $V_{s1}$ ), output diode voltage( $V_{DO}$ ), input current ( $I_{in}$ ), and current of resonant capacitor ( $I_{Cr}$ ) of the proposed converter with 30-V input and 400-V output at output power level 220W

Fig.15 shows switch voltage, output diode, and input current and resonant capacitor current waveforms of high boost ratio hybrid transformer dc-dc converter with single stage.

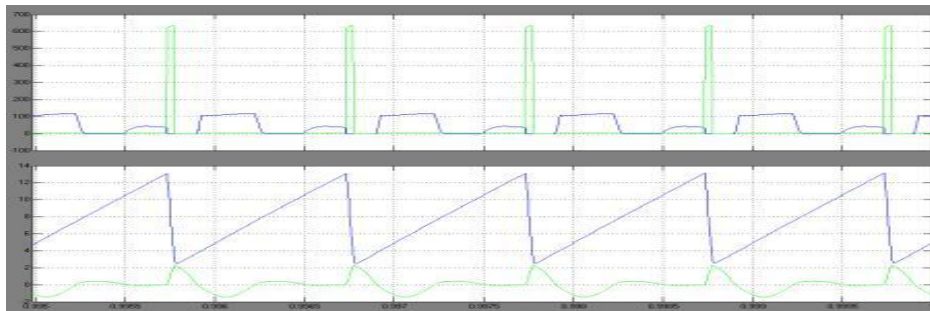


Fig.16. Simulated waveforms of high boost converter with two stages: switch voltage( $V_{s1}$ ), output diode voltage( $V_{DO}$ ), input current ( $I_{in}$ ), and current of resonant capacitor ( $I_{in}$ ) of the proposed converter with 30-V input and 800-V output at output power level 220W.

Fig.16 shows switch voltage, output diode, and input current and resonant capacitor current waveforms of high boost ratio hybrid transformer dc-dc converter with two stage.

## V. CONCLUSION

This paper presents highly efficient high boost ratio hybrid transformer DC-DC converter for photovoltaic module applications with following features and benefits:

- This converter transfers the capacitive and inductive energy simultaneously to increase the total power delivery reducing losses in the system.
- The conduction loss in MOSFET is reduced as a result of the low-input RMS current and switching loss is reduced with a lower turn-off current.
- With these improved performances, the converter can maintain high efficiency under low output power and low-input voltage conditions.

## REFERENCES

- [1]. Bin GU, Jason Dominic, Jih-Sheng Lai and Chuang Liu, "High Boost ratio hybrid transformer DC-DC converter for photovoltaic module Applications", IEEE Trans. Power Electron, vol. 28, no. 4, April 2013.
- [2]. J.S. Lai, "Power conditioning circuit topologies", IEEE Ind. Electron. Mag vol. 3, no. 2, pp. 2434, Jun. 2009.
- [3]. Q. Zhao and F. C. Lee, "High efficiency, high step-up converters", IEEE Trans. Power Electron., vol. 18, no. 1, pp. 6573, Jan. 2003.
- [4]. M. Van de Sype, K. De Gussemme, B. Renders, A. P. Van den Bossche, and J. A. Melkebeek, "A single switch boost converter with a high Conversion ratio", Proc. IEEE Applied Power Electronics Conf., Austin, TX, Mar. 2005, pp.15811587.
- [5]. R. J. Wai and R.Y. Duan, "High step-up converter with coupled-inductor", IEEE Trans. Power Electron., vol. 20, no. 5, pp. 10251035, Sept.2005.
- [6]. R. J. Wai, C. Y. Lin, C. Y. Lin, R. Y. Duan, and Y. R. Chang, "High-efficiency power conversion system for kilowatt-level standalone generation unit with low input voltage", IEEE Trans. Ind. Electron., vol. 55, no. 10, pp. 37023714, Oct.2008.
- [7]. Y. Xue, L. Chang, S. B. Kjaer, J. Bordonau, and T. Shimizu, "Topologies of single-phase inverter for small distributed power generators: An Overview", IEEE Trans. Power Electron., vol. 19, no. 5, pp. 13051314, Sep. 2004.
- [8]. Liu and S. Duan, "Photovoltaic DC-building module-based BIPV system-concept and design considerations", IEEE Trans. Power Electron., vol.26, no. 5, pp. 14181429, May 2011.
- [9].
- [10].
- [11].
- [12].
- [13].